

FB B 37160

Providence R.I.
This plat accompanies
our report of this date.

PLAT OF
TALLMAN'S LANE
FROM CHESTNUT ST. TO RICHMOND ST.
SCALE 30 FEET PER INCH

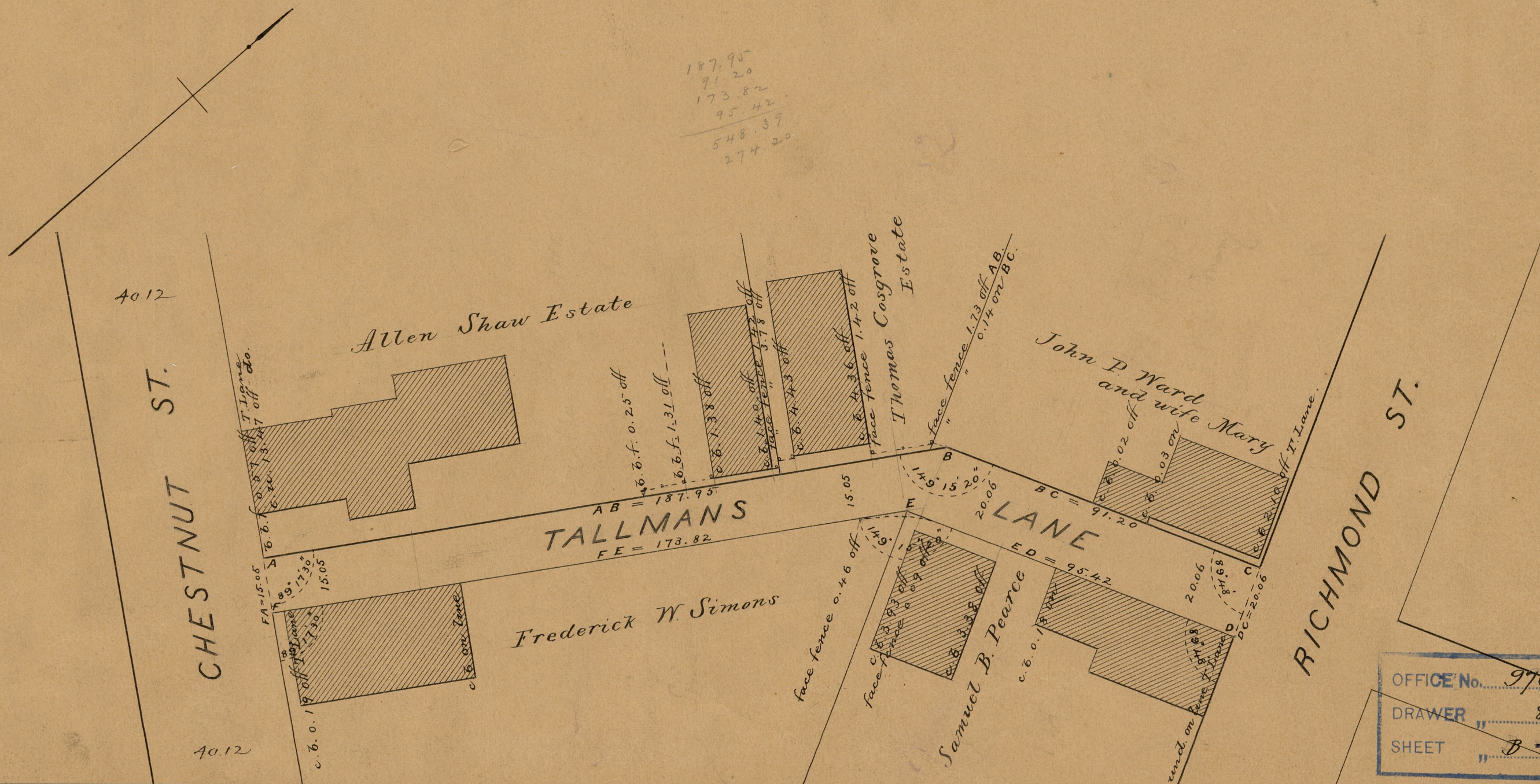
PROVIDENCE, R. I.
CITY ENGINEER'S OFFICE
STREET LINE DEPT.

Aug. 23, 1888

014211

Changed to Tallman St. Oct. 16, 1890

187.95
91.20
173.82
95.42
548.37
274.20



OFFICE No. 9761
DRAWER " 83
SHEET " B-11